

MetroLED Lighting System



Linear LED Lighting System for Display Illumination

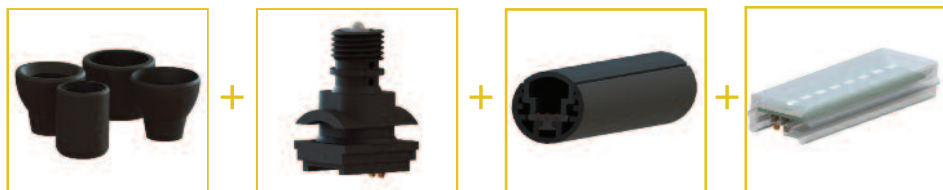
With a choice of either fully positionable spotlights or a linear array of LED modules at close spacings which provides a complete wash of light, this product offers all the flexibility you need for illuminating display cases.

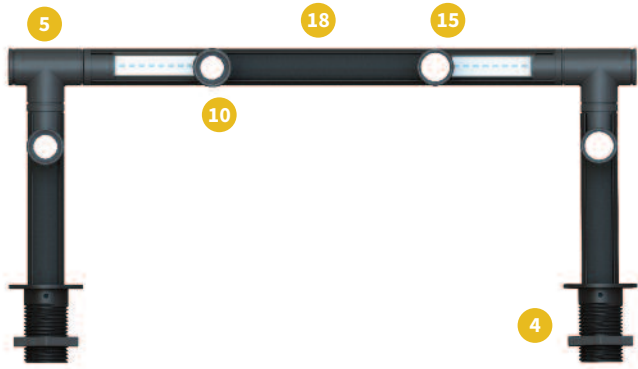
Spotlights are fully tiltable and can be independently moved along the fixture and pointed exactly where you need them. There is also a choice of trumpets which offer either wide or narrow beam angles. Gantry systems also feature rotating corners so that the complete light bar can be rotated by 350°.

The system runs on dual circuit power, allowing for 2 independent dimming levels and has the option of using either 3000K or 4000K LED's.

The MetroLED systems offer versatility combined with the efficiency and power of LED modules, ease of installation and very low maintenance requirements.

The MetroLED. What will you create?





Straight gantries with a mix of spotlights and linear LED's.



Two diverse options for creating vertical lighting fixtures. The rotatable 45° elbow is fitted with 2 spotlight fittings which can be independently angled toward any object. The Gooseneck fitting sits atop a MetroLED extrusion and rotation and 2 articulation methods giving great versatility.



Rectangular extrusion fitted with linear LED's and secured with c-clips makes an unobtrusive under shelf lighting system.



Corner gantry systems with full rotation of all tubes. Fully customisable with a mixture of spotlights and linear lights on both vertical and horizontal bars.

1 MetroLED Elbow [1]
MTL-EB



2 Twistlock Spot Fitting
[2]
MTL-SL-4K or MTL-SL-3K



3 Mounting Feet [2]
MTL-MF / RT / RS / CS



4 Rotating Corner A [3]
MTL-RCA / L or MTC-RC A/ R



5 MetroLED Gooseneck
[1]
MTL-GS3K or MTL-GS4K



6 Rotating Corner B [3]
MTL-RCB / L or
MTC-RCB / R



7 Dimmer Cover Plate [4]
MTL-DP



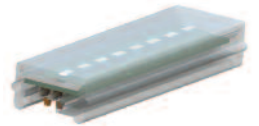
8 Driver & Dimmer [5]
MTL-D4 or MTL-D7



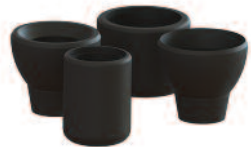
9 Three Way Corner
MTL-TWC



10 Linear Strip
45, 95, 245 or 450mm
MTL-LS45 / 95 / 245 / 450
+ 3K or 4K



11 Trumpet & Lens Choice [6]
MTL-LNS-CL / W / N / C / F
MTL-LNS-MO / W / N / C / D



12 Rectangular Power In
MTL-RPIC



13 Round Power In
MTL-PIC



14 End Cap
MTL-EC



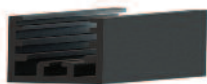
15 Round Wall Clip
MTL-CLP



16 Power Supply Unit [5]
MTL-PSU / UK / US / EU



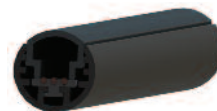
17 Rectangular Extrusion
MTL-RE



18 Spare Infill
MTL-INF



19 Ø20mm Extrusion & Infill
MTL-EI



20 Rectangular Wall Clip
MTL-RCLP



LED Specifications

Description	Details
Main supply voltage	100-240VAC, 50-60Hz
PSU output	5VDC
Min. ambient temp.	-10°C
Max. ambient temp.	+45°C
Power connection	2.1 x 5.5 x 12mm
LED type/model	White light
LED linear CRI	>92 (typical)
LED linear color temp.	3000K and 4000K
LED linear efficiency	3000K: 65 lm/w 4000K: 67lm/w
LED linear current	10mA
LED spot CRI	>96 (typical)
LED spot color temp.	3000K and 4000K
LED spot efficiency	3000K: 44 lm/w 4000K: 38lm/w
LED spot current	100mA
LED life	50000 hours in ambient 25°C

General Technical Specifications

Component	Variant	Nominal Power	Working Current	Notes
Spotlight	3000K	0.5W	100mA	Available in spot and flood fitting
Spotlight	4000K	0.5W	100mA	Available in spot and flood fitting
Linear array 45mm	3000K	0.4W	80mA	
Linear array 45mm	4000K	0.4W	80mA	
Linear array 95mm	3000K	0.8W	160mA	
Linear array 95mm	4000K	0.8W	160mA	
Linear array 245mm	3000K	2.3W	460mA	
Linear array 245mm	4000K	2.3W	460mA	
MetroLED driver	Version 2	N/A	Variable	Overload indication and shutdown

Ordering notes

- [1] Twistlock spot fittings, gooseneck, elbow and linear strip modules are available in both 3K & 4K color temperature variants.
- [2] Three types of mounting feet are available - round threaded as well as round and corner screw down.
- [3] Both types of rotating corners are available in left and right handed versions. Please suffix code with L or R to signify.
- [4] Dimmer cover plates fit over standard single gang lighting pattress and are available in chrome, brass and brushed aluminium colors.
- [5] Power supply unit has fittings for UK, US and EU sockets. Can be used with driver & dimmer or individually if no dimming is required.
- [6] Two ranges of trumpets are available. Classic (CL) & Modern (MO). Classic trumpets have clear or frosted lenses whilst modern are clear or diffused. Both trumpet ranges are available with wide or narrow angled lenses.

All parts are available in black, white or grey. Please specify when ordering. Except where specified, all parts are the same price regardless of color.

Fixing notes

UFO supply C-clips for both round & rectangular MetroLED extrusions. Please ensure that:

- A clip is installed **at least** at either end and in the centre of all runs of extrusion.
- For extrusions of 1 metre (3.28ft) or less, a minimum of 3 clips must be used.
- For extrusions over 1 metre (3.28ft) in length, 1 clip must be installed every 500mm (1.64ft) along the extrusion length.

General

We are constantly looking at ways to enhance MetroLED, so specifications are subject to change without notice.