

# PRODUCT SPECIFICATION SHEET



Rev. C1

## UFO Light Tube Linear Lighting

Light Tubes are a versatile solution to give a general wash of light and can be easily hidden from view or finished to become an integral part of the display design. They consist of a metal tube which holds end-emitting fibres at close spacings to give an even light. The points of light can be staggered if desired to cover a wider area.

Light tubes can be supplied as a straight tube with the tails emerging from one end or as a U-shaped gantry to be surface mounted. Mounting brackets for tubes can also be supplied. Light Tubes are made to order, to the sizes you need and can be raw aluminium, polished stainless steel or custom painted.

Normal spacings for the fibre are 50mm (1.97"), 75mm (2.95") or 100mm (3.94"). End caps are available if required.

Light tube, maximum points of light in tube from one end with 30mm common end

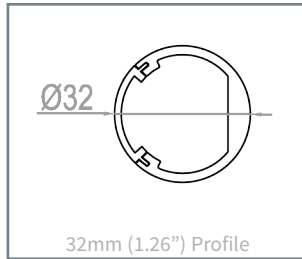
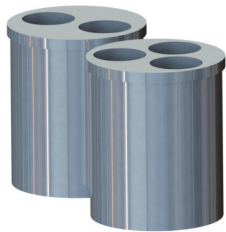
Profile	1.8mm*	2.0mm	3.0mm
32mm (1.26")	45	20	14
38mm (1.5")	70	35	23
52mm (2.05")	115	54	40

When using a mini common end connector, maximum tails per tube

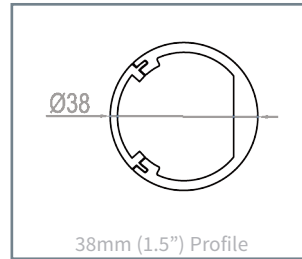
Fibre	Max Tails
1.8mm	31
2.0mm	26
3.0mm	10

### Common End Connectors

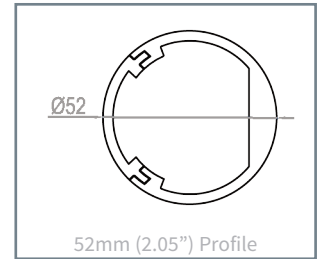
Light Tubes, Bars and Wands can be supplied with either standard 30mm or 12.5mm mini common ends. Where a mini common end is used, a 30mm adaptor is required to fit to a standard light source. Mini common ends allow for more than one independently removable tube to be connected to a light source and require a smaller hole to pass through for easier installation.



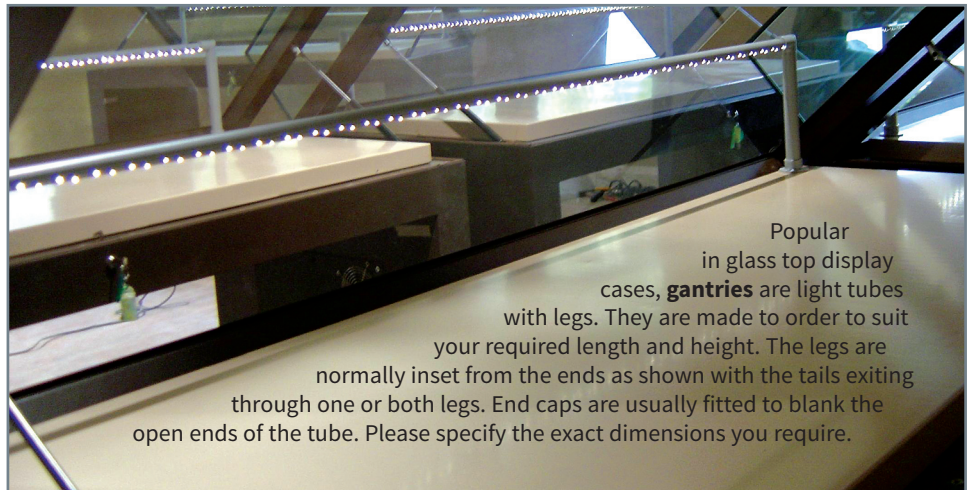
32mm (1.26") Profile



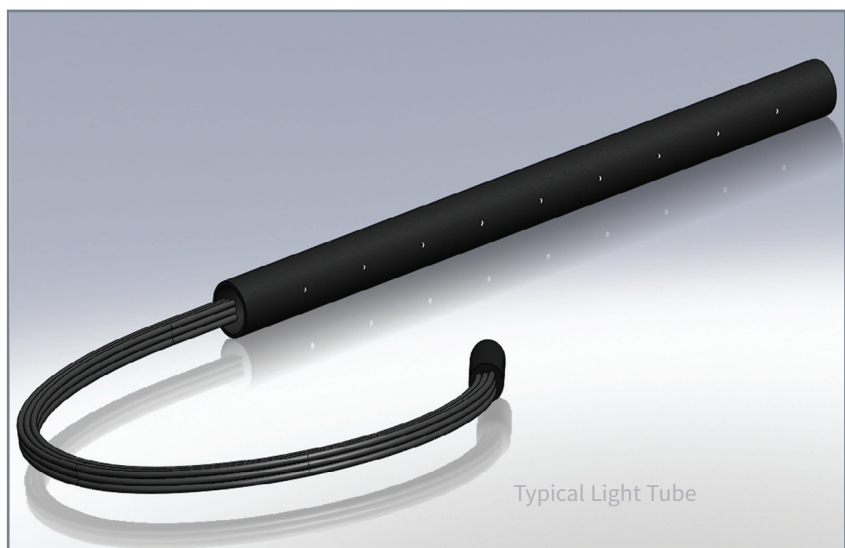
38mm (1.5") Profile



52mm (2.05") Profile



Popular in glass top display cases, **gantries** are light tubes with legs. They are made to order to suit your required length and height. The legs are normally inset from the ends as shown with the tails exiting through one or both legs. End caps are usually fitted to blank the open ends of the tube. Please specify the exact dimensions you require.



Typical Light Tube



Note that drawing dimensions are shown in mm

# PRODUCT SPECIFICATION SHEET



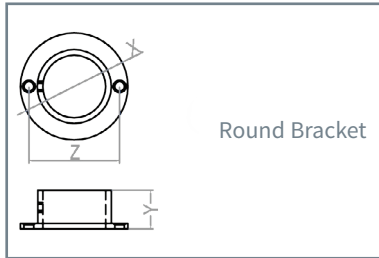
Rev. C1

## UFO Light Tube & Bar Mounting Options

A number of types of accessory brackets are available for Tubes and Bars. For Light Wand brackets please see the Light Wand section. The Round Brackets are for vertical or horizontal mounting of tubes. The tube is locked with a grub screw.

They are also available round or with either one straight side or two straight sides to allow mounting as close as possible to a flat surface or in a corner. Square Brackets are for surface mounting tubes horizontally or vertically and come as split halves.

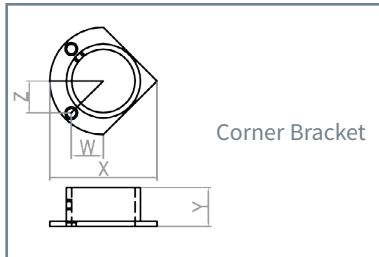
Adjustable Clip Brackets allow for horizontal mounting and the standoff can be extended using threaded rod. They can be fitted on site, even to Light Bars.



Round Bracket

### Dimensions (mm)

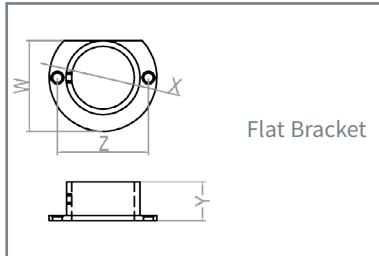
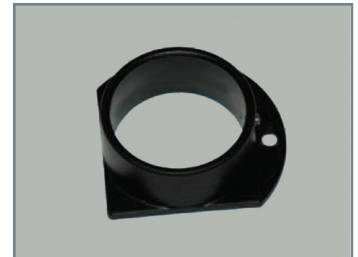
Profile	Part No.	X	Y	Z
27mm	ABR27R	50	20	41.5
32mm	ABR32R	55	20	46.5
38mm	ABR38R	62	20	53
44mm	ABR44R	67	20	58.5
44mm	ABR52R	75.5	20	67



Corner Bracket

### Dimensions (mm)

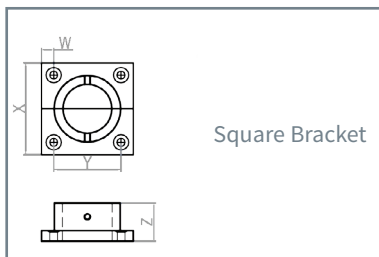
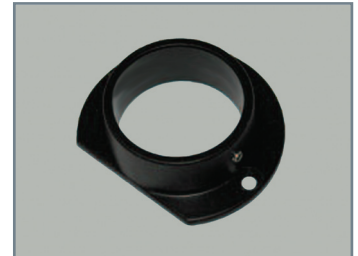
Profile	Part No.	W	X	Y	Z
27mm	ABR27C	10.25	50	20	14.5
32mm	ABR32C	16.5	55	20	16.5
38mm	ABR38C	19.5	62	20	18
44mm	ABR44C	20.5	67	20	20.5
44mm	ABR52C	25.25	84.5	20	25.25



Flat Bracket

### Dimensions (mm)

Profile	Part No.	W	X	Y	Z
27mm	ABR27F	41.5	50	20	41.5
32mm	ABR32F	46.5	55	20	46.5
38mm	ABR38F	53	62	20	53
44mm	ABR44F	58.5	67	20	58.5
44mm	ABR52F	67	75.5	20	67

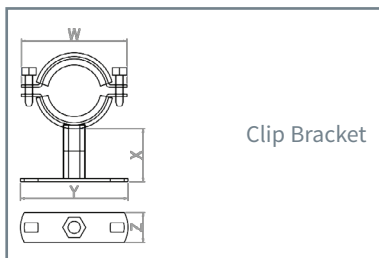
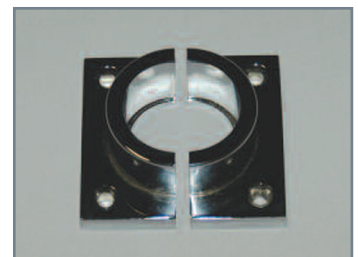


Square Bracket

### Dimensions (mm)

Profile	Part No.	W	X	Y	Z
32mm	ABR32S	8	60	44	25
38mm	ABR38S	8	66	50	25

Note: only available for 32mm and 38mm profiles.



Clip Bracket

### Dimensions (mm)

Profile	Part No.	W	X	Y	Z
27/32mm	ABR32N	81.5	34	70	19.5
38/44mm	ABR40N	92	34	70	19.5
52mm	ABR48N	100	34	70	19.5

Note: has a black neoprene lining to help prevent scratching

