

# PRODUCT SPECIFICATION SHEET

## Sirius IP White Light IP67 LED Illuminator



Rev. C5



A very powerful fiber optic illuminator, utilising LED technology, featuring full IP67 ingress protection and powered by an external 24V DC power supply unit.

Extremely high power output makes this illuminator suitable for multiple lighting tasks where traditionally metal halide units have been employed. Almost silent in operation, the Sirius outputs light which is around 20% brighter than a 150W metal halide lamp.

The Sirius IP has an inbuilt manual dimmer located behind a protective panel, and dimming is also controllable via either DMX or 0-10V.

With a standard 30mm (1.18") fiber port connector, this illuminator is equally suited to new projects or for retro-fitting to existing fiber optic installations - particularly for separate feed illuminators using the optional interface.

Please note that although this illuminator is fully IP67 rated and can be used in wet/outdoor areas, it is not suitable for submersion in water and it should not be buried underground.

### GENERAL INFORMATION

Port Connector Size	30mm (1.18") diameter
Fiber Type	Glass / PMMA
Material/Finish	Hard anodised aluminium
Dimensions (L x W x H)	330mm (13") x 240mm (9.4") x 164mm (6.5")
Weight	6.46kg (14.24lb)
Operating Environment	External - IP67 rated
Min Ambient Temp.	-10°C (14°F)
Max Ambient Temp.	+45°C (113°F)

### LIGHTING AND CONTROL INFORMATION

Control Functionality	Manual \ DMX \ 0-10V dimming
DMX Functionality	User addressable to 512
DMX Channels	3 channels

### LED ARRAY DATA

LED Array Type	White light
LED Array Power	90W
LED Array Model	LED engine L2P 24 die emitter
LED Array Life (L70, B10)	> 36,000 hours
Cool White LED Array	5500K \ 75CRI \ 5700lm
Studio white LED array	5300K \ 88CRI \ 4650lm
Neutral white LED array	4000K \ 82CRI \ 5300lm
Warm white LED array	3000K \ 83CRI \ 4650lm

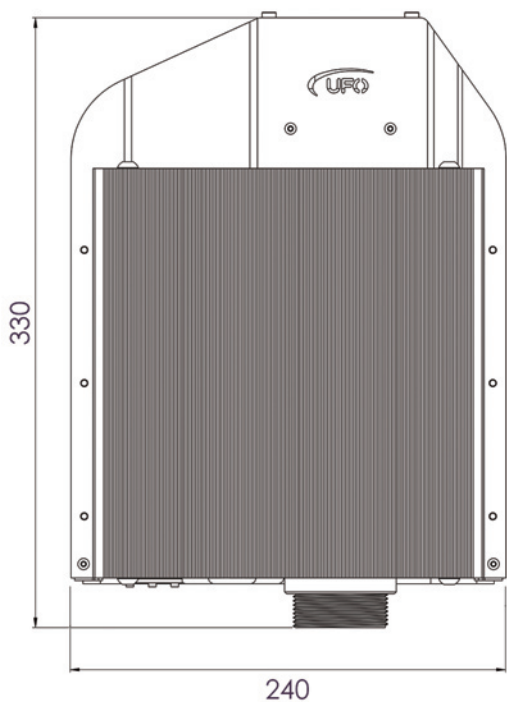
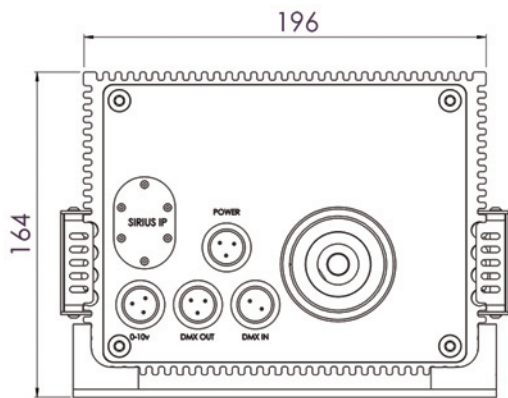
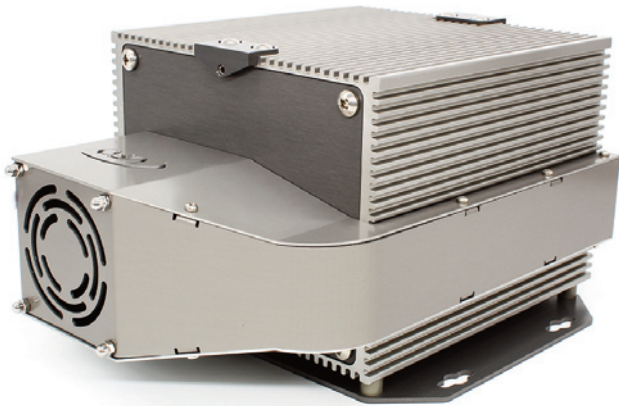
### SEA WATER / SALINE ENVIRONMENTS

Please be aware that UFO will not specify, supply or install this light source for use in any area where corrosion or damage from saline may occur. This includes near the sea, on ships or in any other areas where the light source would be in an unprotected area.

Damage caused by salt water due to improper, unprotected siting of the light source will void any and all UFO warranties on the product. UFO strongly recommend that the light source is not installed in any location where such damage may occur.

## CLEARANCE / VENTILATION

It is imperative that a gap of 200mm (8") is left around the unit. This is to allow air to circulate and prevent overheating. The location must have free ventilation and must not have an ambient temperature higher than that specified for the unit.



Note that drawing dimensions are shown in mm

## ELECTRICAL CHARACTERISTICS

Supply Voltage	90-264Vac
Mains Running Current	0.42A @ 240Vac
Mains Voltage VA rating	100VA
External PSU Type	Meanwell, 24VDC, IP67, Type HL Driver
Fan Type	ebm-papst, 80mm, IP68, 32dBA

## AVAILABLE ACCESSORIES

PS-IP-AW-24-120-UK PS-IP-AW-24-120-EU PS-IP-AWB-24-100-US	24V 120W IP67 PSU, IP Connector & Cable Assembly (UK, EU or USA options available)
SF-IPSI-AW-CW-N	Separate Feed Interface - complete with 2m cable & IP connector
AC-CBL-2-DMX-UKEU AC-CBL-2-DMX-US	DMX Cable Assembly - complete with 2m cable & IP connector (UK/EU or USA options)
AC-CBL-2-10V-UKEU AC-CBL-2-10V-US	0-10V Cable Assembly - complete with 2m cable & IP connector (UK/EU or USA options)
RE-IPSI-AW-CWD-N	Sirius Aqua Remote Control

## ILLUMINATOR PRODUCT CODES

MODEL	COLOR TEMPERATURE		EFFECTS	
UFO SIRIP	Cool White	CW	White Light	X
	Studio White	SW		
	Warm White	WW		
	Neutral White	NW		
UFO SIRIP				

e.g. UFO SIRIP - CW - X



IP67

