

PRODUCT SPECIFICATION SHEET

Sirius IP Decorative IP67 LED Illuminator



Rev. C7



A very powerful fiber optic illuminator, utilising LED technology, featuring full IP67 ingress protection and powered by an external 24V DC power supply unit.

Extremely high power output makes this illuminator suitable for multiple lighting tasks where traditionally metal halide units have been employed. Almost silent in operation, the Sirius outputs light which is around 20% brighter than a 150W metal halide lamp.

A choice of either a 6 color colorwheel or a twinkle effect wheel can also be installed, and this offers the same control options as the dimming effects; manual, 0-10V or DMX. The unit also offers optional separate feed control.

The Sirius IP has an inbuilt manual dimmer located behind a protective panel, and dimming is also controllable via either DMX or 0-10V.

With a standard 30mm (1.18") fiber port connector, this illuminator is equally suited to new projects or for retro-fitting to existing fiber optic installations - particularly for separate feed illuminators using the optional interface.

Please note that although this illuminator is fully IP67 rated and can be used in wet/outdoor areas, it is not suitable for submersion in water and it should not be buried underground.

GENERAL INFORMATION

Port connector size	30mm (1.18") diameter
Fiber type	Glass / PMMA
Material/Finish	Hard anodised aluminum
Dimensions (L x W x H)	330mm (13") x 240mm (9.4") x 164mm (6.5")
Weight	6.66kg (14.68lb)
Operating Environment	External - IP67 rated
Min Ambient Temp.	-10°C (14°F)
Max Ambient Temp.	+45°C (113°F)

LIGHTING AND CONTROL INFORMATION

Dimming Functionality	Manual \ DMX \ 0-10V dimming
DMX Functionality	User addressable to 512
DMX Channels	3 channels
Effects Wheel Options and Functionality	Color and twinkle controlled by 0-10V, DMX and manual

LED ARRAY DATA

LED Array Type	White light
LED Array Power	90W
LED Array Model	LED engine L2P 24 die emitter
LED Array Life (L70, B10)	> 36,000 hours
Cool White LED Array	5500K \ 75CRI \ 5700lm
Neutral white LED array	4000K \ 82CRI \ 5300lm
Warm white LED array	3000K \ 83CRI \ 4650lm

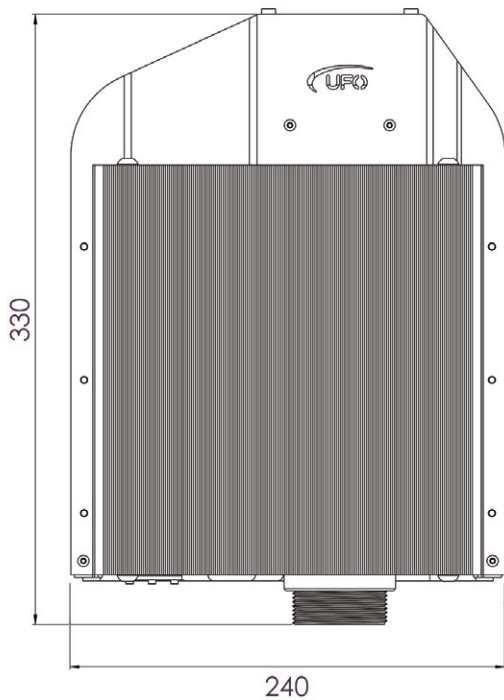
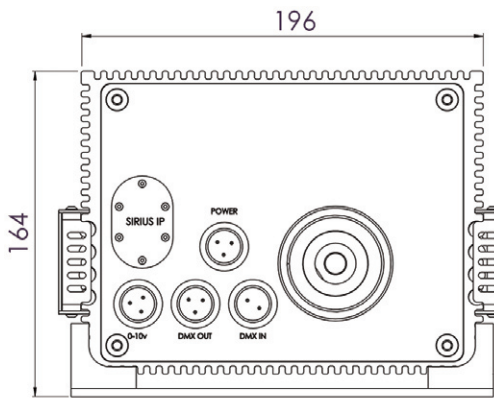
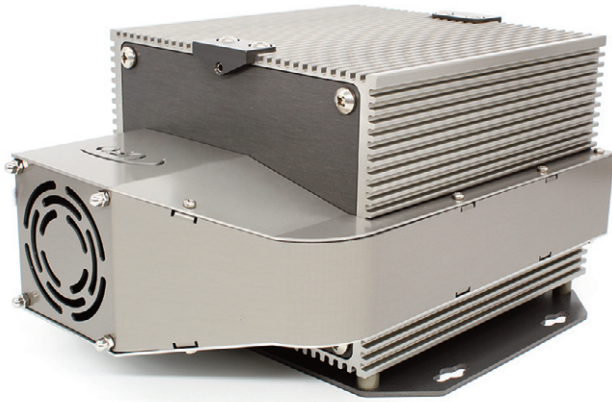
SEA WATER / SALINE ENVIRONMENTS

Please be aware that UFO will not specify, supply or install this light source for use in any area where corrosion or damage from saline may occur. This includes near the sea, on ships or in any other areas where the light source would be in an unprotected area.

Damage caused by salt water due to improper, unprotected siting of the light source will void any and all UFO warranties on the product. UFO strongly recommend that the light source is not installed in any location where such damage may occur.

CLEARANCE / VENTILATION

It is imperative that a gap of 200mm (8") is left around the unit. This is to allow air to circulate and prevent overheating. The location must have free ventilation and must not have an ambient temperature higher than that specified for the unit.



Note that drawing dimensions are shown in mm

ELECTRICAL CHARACTERISTICS

Supply Voltage	90-264Vac
Mains Running Current	0.42A @ 240Vac
Mains Voltage VA rating	100VA
External PSU Type	Meanwell, 24VDC, IP67, Type HL Driver
Motor Type	Rotalink 25C13/YS0LPSL3E 12V 60:1
Fan Type	ebm-papst, 80mm, IP68, 32dBa

AVAILABLE ACCESSORIES

PS-IP-AW-24-120-UK PS-IP-AW-24-120-EU PS-IP-AWB-24-100-US	24V 120W IP67 PSU, IP Connector & Cable Assembly (UK, EU or USA options available)
SF-IPSI-AW-CW-N	Separate Feed Interface - complete with 2m cable & IP connector
AC-CBL-2-DMX-UKEU AC-CBL-2-DMX-US	DMX Cable Assembly - complete with 2m cable & IP connector (UK/EU or USA options)
AC-CBL-2-10V-UKEU AC-CBL-2-10V-US	0-10V Cable Assembly - complete with 2m cable & IP connector (UK/EU or USA options)
RE-IPSI-AW-CWD-N	Sirius Aqua Remote Control

ILLUMINATOR PRODUCT CODES

MODEL	COLOR TEMP		EFFECTS		SUPPLY		SENSOR	
UFO SIRIP	Cool White	CW	White Light	X	Single Feed	X	Sensor	S
	Warm White	WW	Colour Wheel	C	Separate Feed	F	No Sensor	X
	Neutral White	NW	Twinkle Wheel	T				
UFO SIRIP								

e.g. UFO SIRIP - CW - C - F - S

For the configuration of a twinkle wheel with sensor, the wheel is supplied with a cut out segment. The wheel in motion will give an uninterrupted twinkle by rotating backwards and forwards either side of the segment. When stop is selected the wheel will come to rest at the segment giving unobstructed white light output.



IP67

